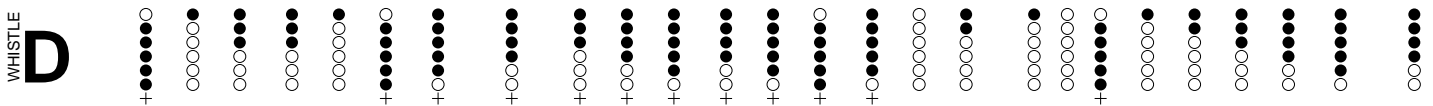
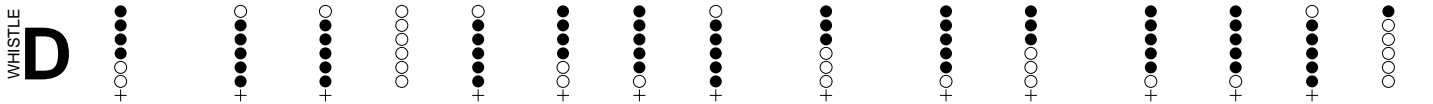
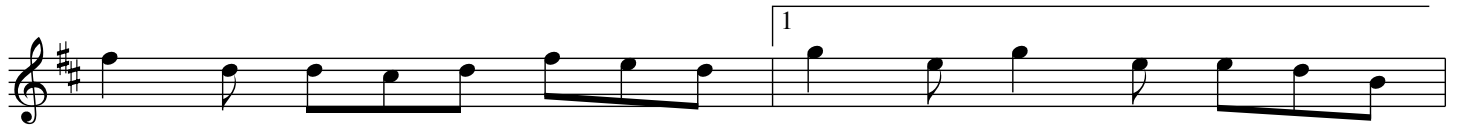
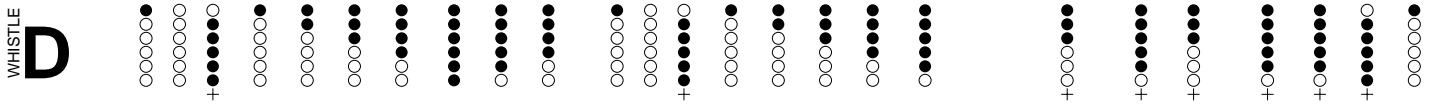
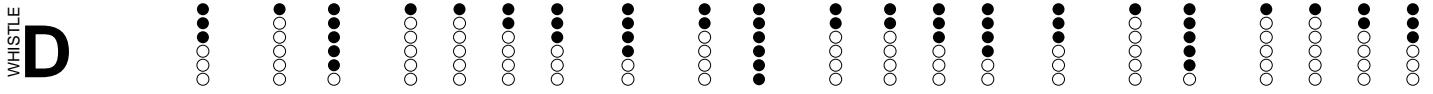


# A Fig For A Kiss

*slip jig*



# The Snowy Path

*slip jig*

Sheet music for "The Snowy Path" (slip jig) in D major, 3/8 time. The music is presented in five systems, each with a standard musical staff and a corresponding whistle fingering diagram.

**System 1:** Chords D, G, D. The melody consists of eighth and quarter notes. The whistle fingering diagram shows fingerings for D, G, and D, with some notes marked with a '+' sign.

**System 2:** Chords Em, D, G. The melody continues with eighth and quarter notes. The whistle fingering diagram shows fingerings for Em, D, and G, with some notes marked with a '+' sign.

**System 3:** Chords D, Em, A, G. The melody includes a double bar line. The whistle fingering diagram shows fingerings for D, Em, A, and G, with some notes marked with a '+' sign.

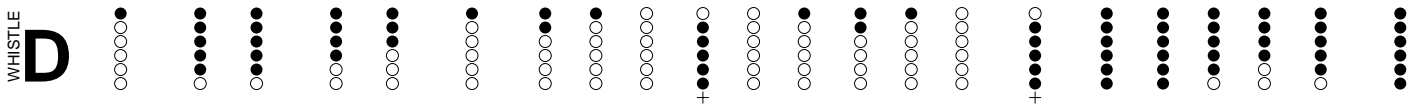
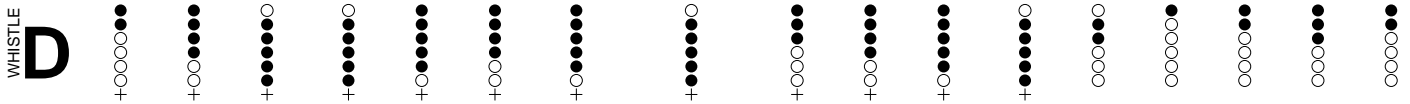
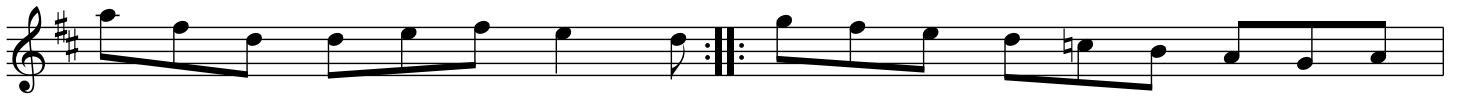
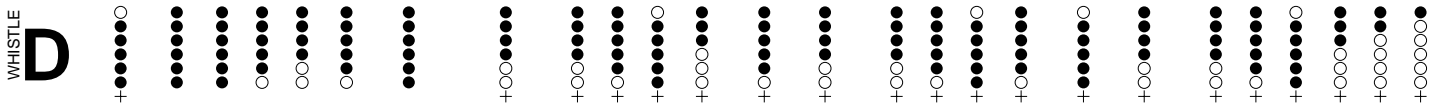
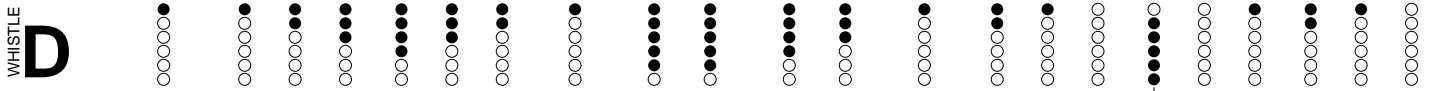
**System 4:** Chords Bm, D, A. The melody continues with eighth and quarter notes. The whistle fingering diagram shows fingerings for Bm, D, and A, with some notes marked with a '+' sign.

**System 5:** Chords G, D, Em. The melody concludes with eighth and quarter notes. The whistle fingering diagram shows fingerings for G, D, and Em, with some notes marked with a '+' sign.

# Fox Hunters

*Slip Jig*

♩ = 120



# Dever The Dancer

WHISTLE **D**

The musical score for 'Dever The Dancer' is presented in three systems. Each system consists of a musical staff in treble clef with a key signature of one sharp (F#) and a 3/8 time signature. Below each staff is a corresponding line of dot notation, where each dot represents a specific pitch and duration. The notation uses a combination of open and closed circles, with some dots placed on a vertical line to indicate specific rhythmic values. The first system contains 24 measures, the second system contains 16 measures, and the third system contains 24 measures. The notation is a form of musical shorthand, likely derived from a specific notation system used in folk music or dance.

WHISTLE **D**

WHISTLE **D**

WHISTLE **D**